

SUMMARY OF QUANTITIES

CODE NO. X020

ITEM NO.	ITEM	UNIT	BRIDGE NO. 2926					BRIDGE NO. 2927					BRIDGE NO. 2928					BRIDGE NO. 2929					TOTALS JOB NO. 3452
			Bents 1-6	Bents 2-5	Spans 1-5	Spans 2-4	Totals	Bents 1-6	Bents 2-5	Spans 1-5	Spans 2-4	Totals	Bents 1-5	Bents 2-4	Spans 1-4	Spans 2-3	Totals	Bents 1-10	Bents 2-9	Spans 1-9	Spans 2-8	Totals	
103	Dry excavation for Structures	Cu.Yd.	65				65	65				65	65				65	65				65	260
SP-802	Class "S" Concrete for Bridges	Cu.Yd.	13.60	23.12	77.88	116.13	230.73	13.60	23.12	77.88	116.13	230.73	13.60	17.34	77.88	77.42	186.24	13.60	46.24	77.88	270.97	408.69	1056.39
SP-803	Reinforcing Steel	Lb.	2060	3975	13,495	20,271	39,801	2060	3975	13,495	20,271	39,801	2060	2960	13,495	13,515	32,030	2060	7952	13,495	47,300	70,807	182,439
SP-804	Concrete Piling (15" Octagonal)	Lin.Ft.	272	549			272	264	593			857	240	397			637	256	1199			1455	3770
SP-805-3	Steel Plate Guard Rail (10 Gage)	Lin.Ft.			116	168	284			116	168	284			116	112	228			116	392	508	1304
909	Rip Rap	Cu.Yd.	240				240	127				127	214				214	287				287	868
929	Bridge Name Plates (Type "C")	Each	1				1	1				1	1				1	1				1	4
SP-1052-9	Removal of Existing Bridge Structures & Maintenance of Traffic.	Compl. Item.					*19%					*18%					5%					8%	**50%

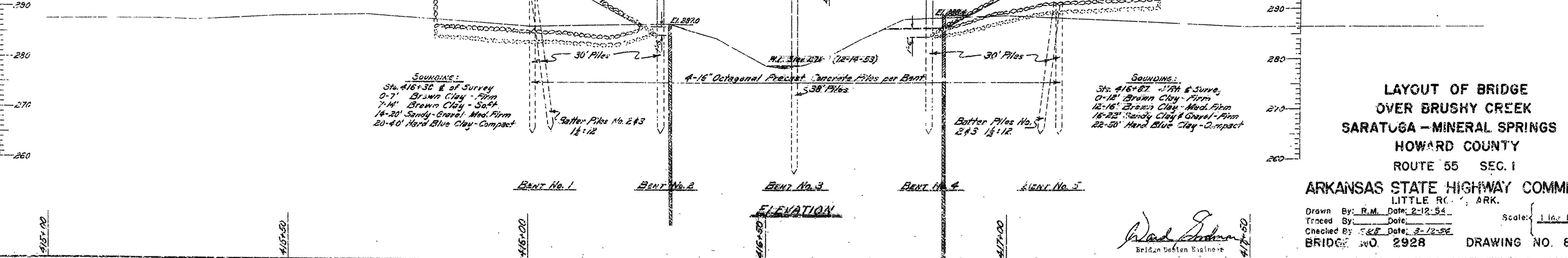
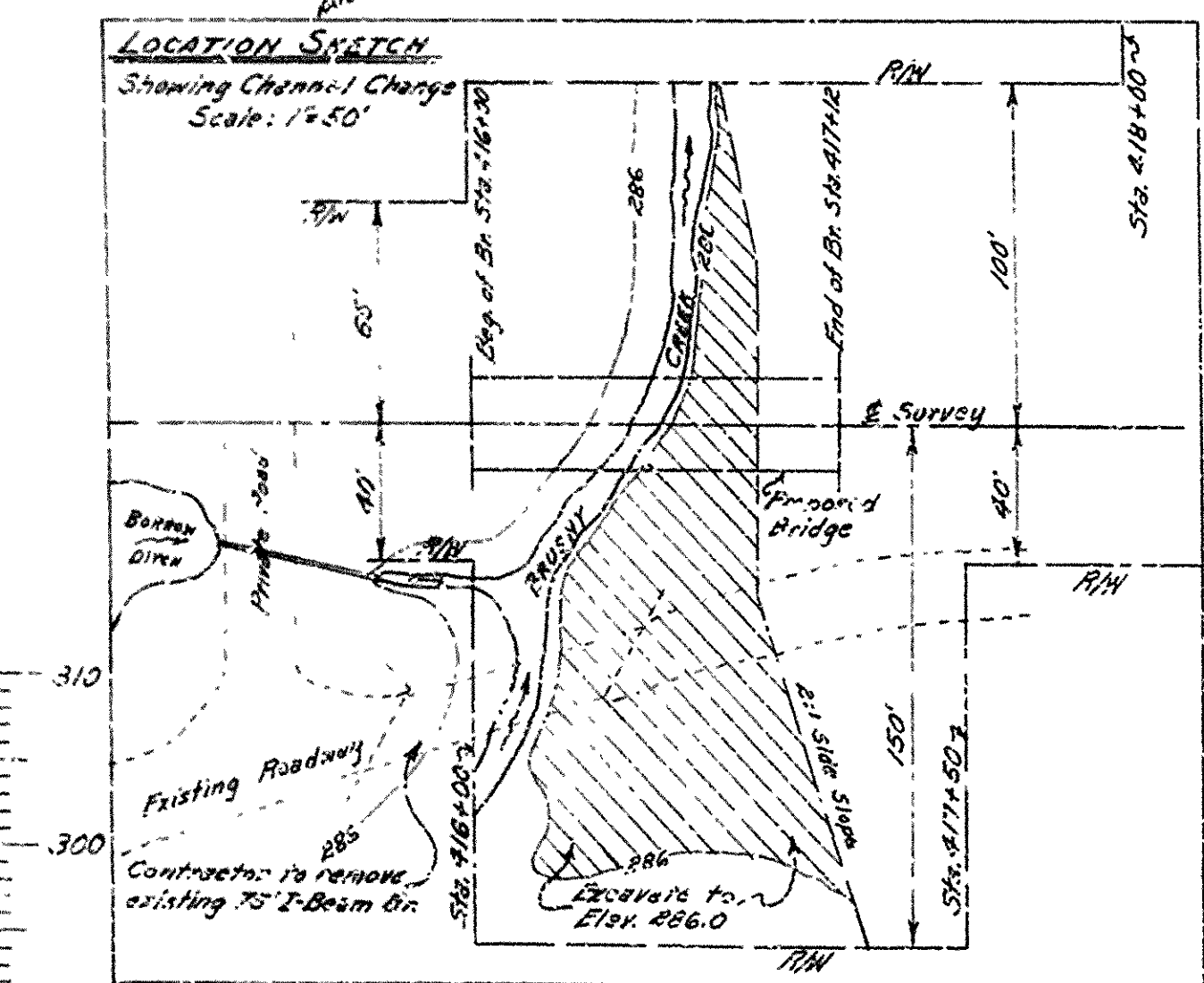
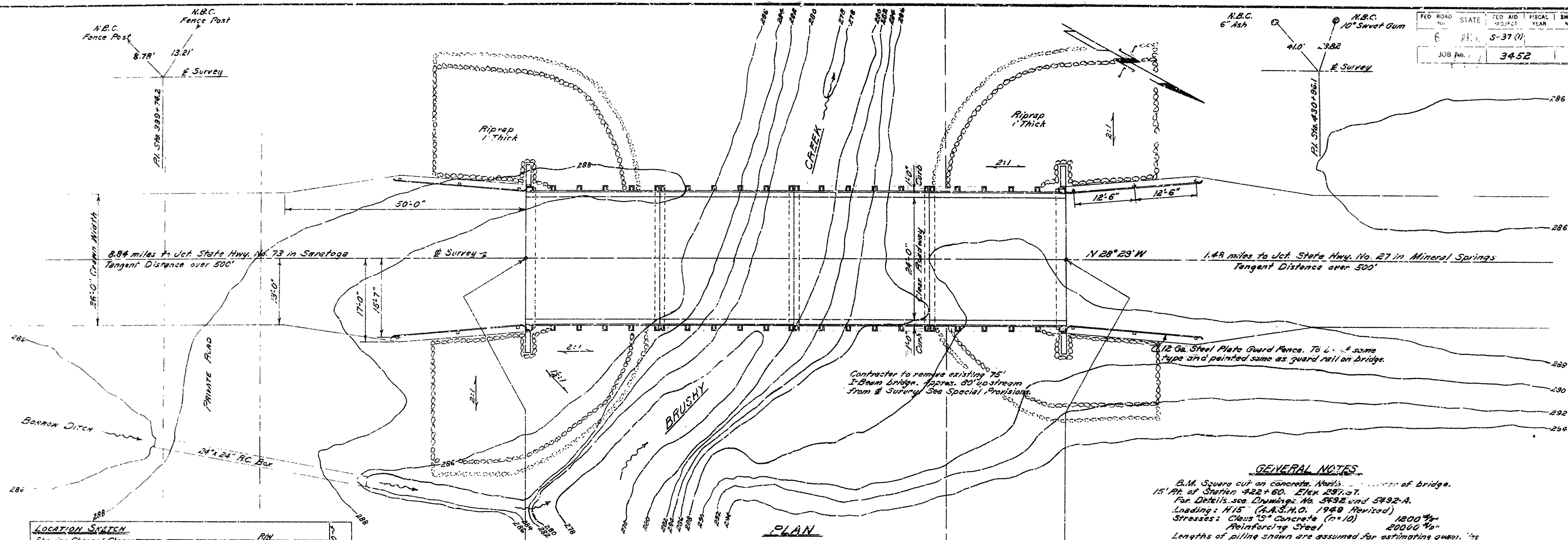
* Temporary detour structures required at these bridge sites.
** for balance of item SP-1052-9, See Roadway Items.

Revised: 3-15-54, V.E.H.
Checked: 3-16-54 L.P.C.

SUMMARY OF BRIDGE QUANTITIES
SARATOGA-MINERAL SPRINGS
HOWARD COUNTY
ROUTE 55 SEC. 1
ARKANSAS STATE HIGHWAY COMMISSION
LITTLE ROCK, ARK.
DRAWN BY: V.E.H. DATE: 2-18-54
CHECKED BY: R.W.M. DATE: 2-22-54
BRIDGES NO. 2926-2929 incl. DRAWING NO. 8451

Bridge Design Engineer

FED. ROAD DIST. NO.	STATE	FED. AID FISCAL YEAR	SHEET NO.	TOTAL SHEETS
6	ARK.	3-37 (U)		
JOB No.	3452			



GENERAL NOTES

B.M. Square cut on concrete. Markings - corners of bridge.

15' At Station 422+60. Elev. 297.57.

For Details see Drawings No. 3492 and 3492-A.

Loading: H-15 (A.S.H.O. 1949 Revised)

Stresses: Class 15 Concrete (n=10) 12000 psi

Reinforcing Steel 20000 psi

Lengths of piling shown are assumed for estimating quantities only. Actual lengths to be determined in the field. Drive one 43' test pile in Bent No. 3.

Drive piling at End Bents No. 1 and 5 after embankment is in place.

End Bents Minimum bearing = 30 Tons per pile.

Intermediate Bents Minimum bearing = 32 Tons per pile.

Drainage Area = 12 sq. mi.

C = 0.6

**LAYOUT OF BRIDGE
OVER BRUSHY CREEK
SARATOGA - MINERAL SPRINGS
HOWARD COUNTY
ROUTE 55 SEC. 1**

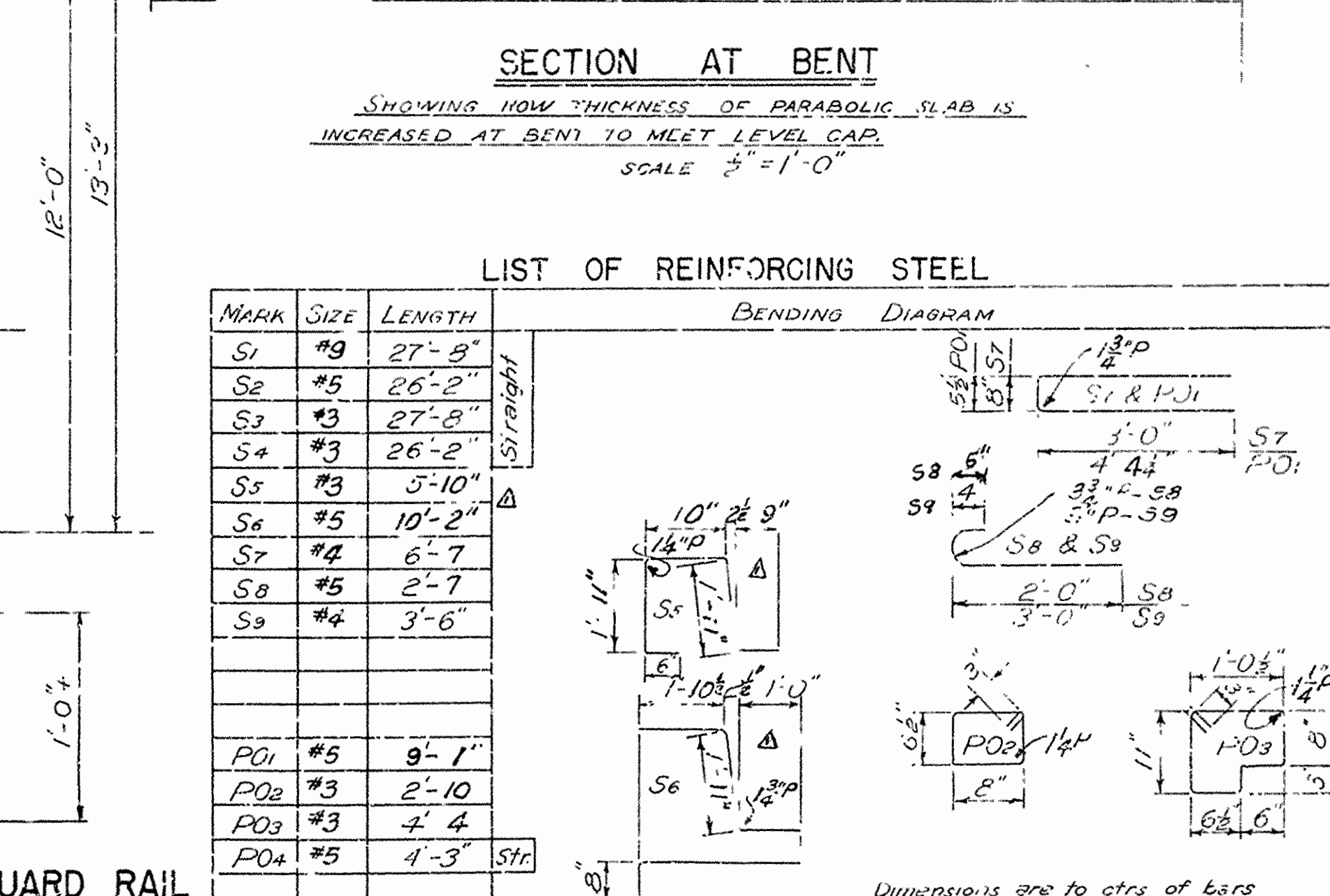
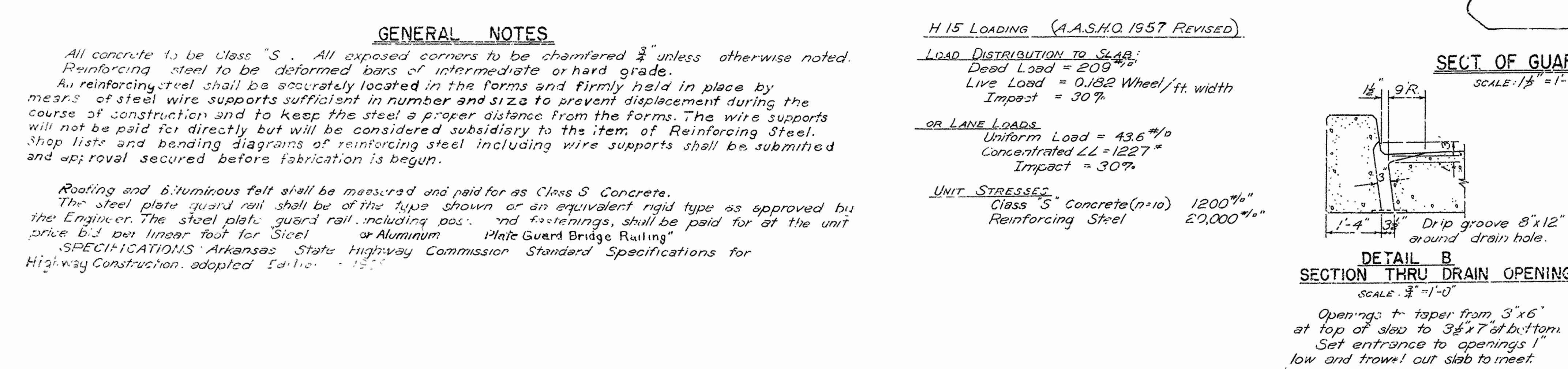
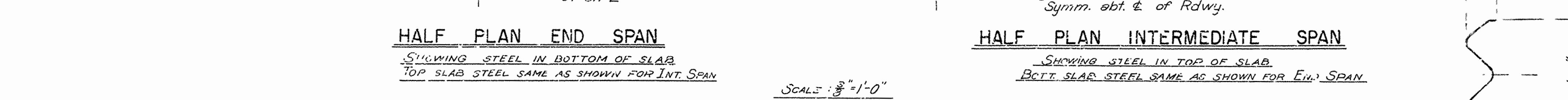
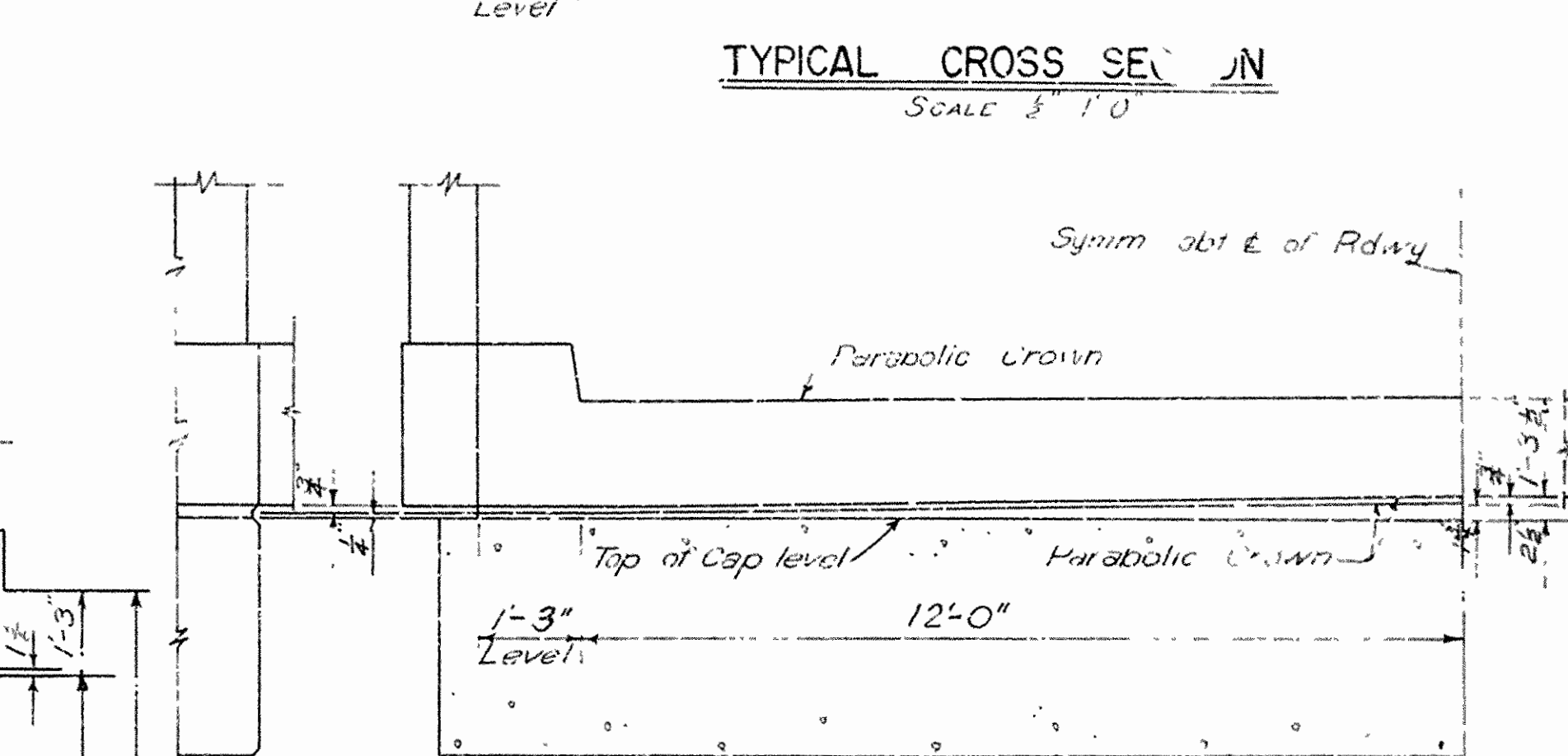
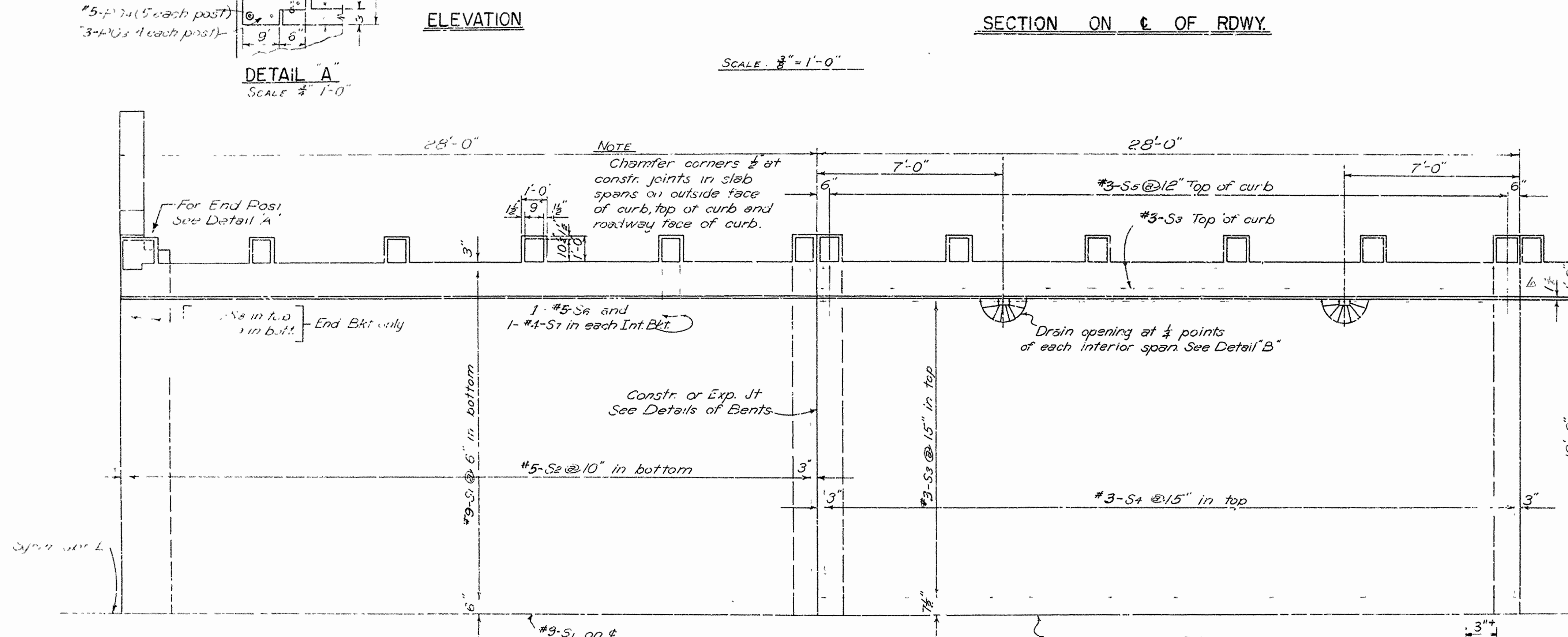
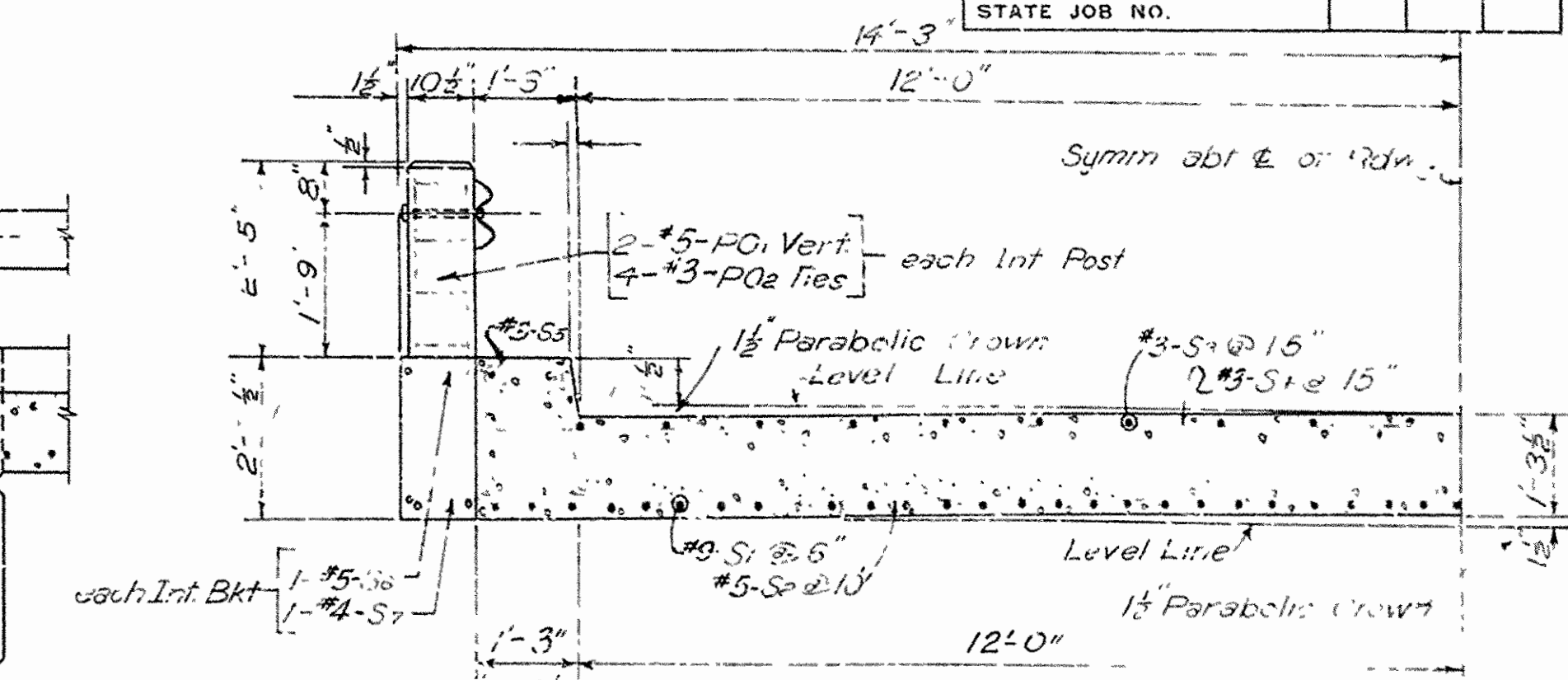
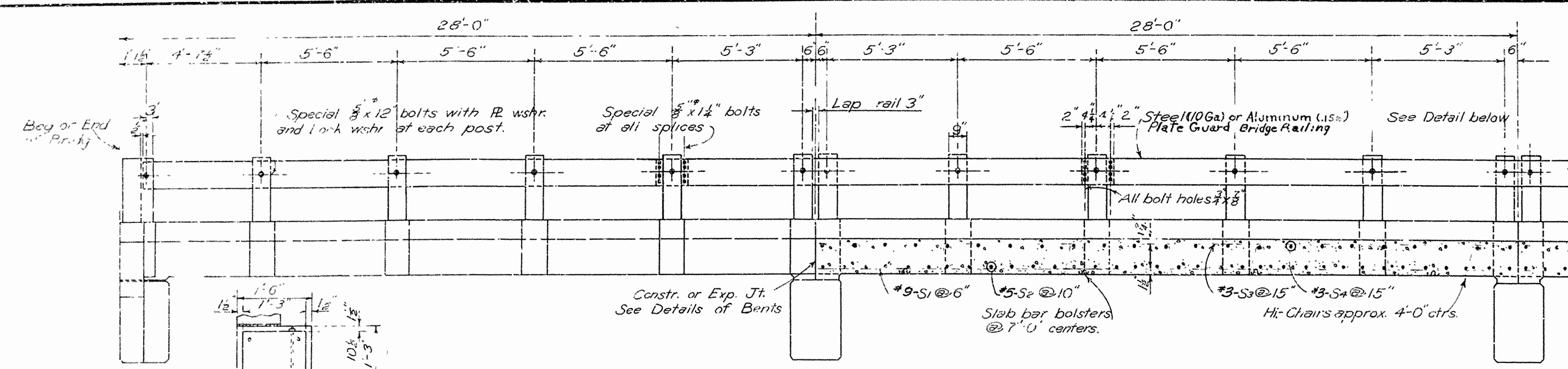
ARKANSAS STATE HIGHWAY COMMISSION
LITTLE ROCK, ARK.

Drawn By: R.M. Date: 2-12-54
Traced By: Date: 3-12-54
Checked By: Date: 3-12-54

BRIDGE NO. 2928 DRAWING NO. 8454

Scale: 1 in. = 10 ft.

FILE NO.	STATE	PROJECT NO.	YEAR	SHEET NO.	TOTAL SHEETS
6	ARK				
STATE JOB NO.					



REVISIONS:

Added 2'-2 1/2" to S5 W.W.M. 5-26-54
 Changed S2 to straight bar W.W.M. 11-1-54
 Changed note for payment of Bituminous and Roofing felt F.R.B. 5-4-56
 Changed bar designation and roadway to gutter line. W.E.W. 11-7-57
 Steel Plate Guard splices; Notes for reinforcing steel and Bridge Railing; Design Loading (1957). L.H.T. 9-15-59
 Revised Guard Rail Note J.M.H. 7-15-60

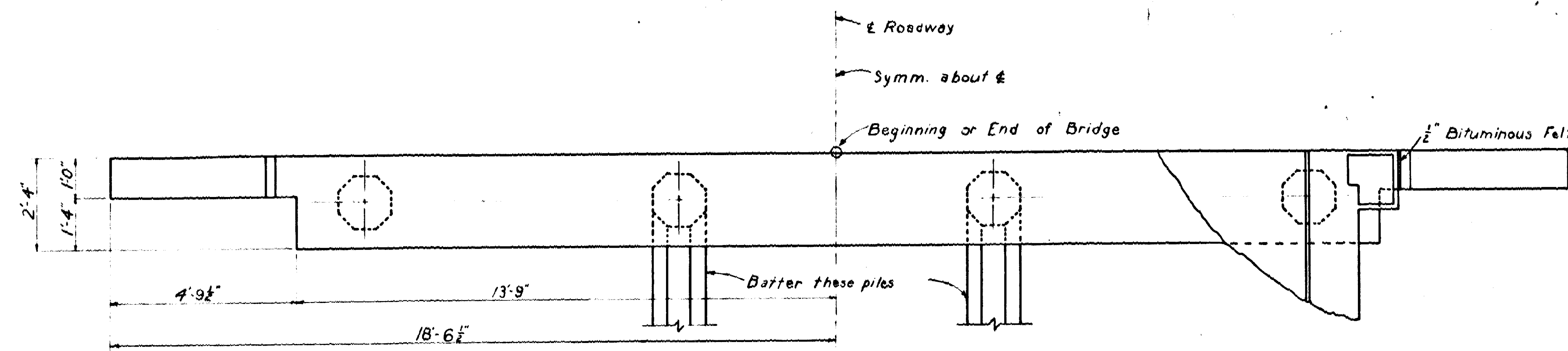
DETAILS OF STANDARD
 28'-0" R.C. SLAB SPAN
 24'-0" CLEAR RDWY. 1'-0" CURBS

ARKANSAS STATE HIGHWAY COMMISSION
 LITTLE ROCK, ARK.

Drawn By: W.W.M. Date: 5-5-52
 Traced By: L.W.H. Date: 6-15-55 and P.F.C. Date: 5-12-55
 Checked By: [Signature] Date: 5-12-55

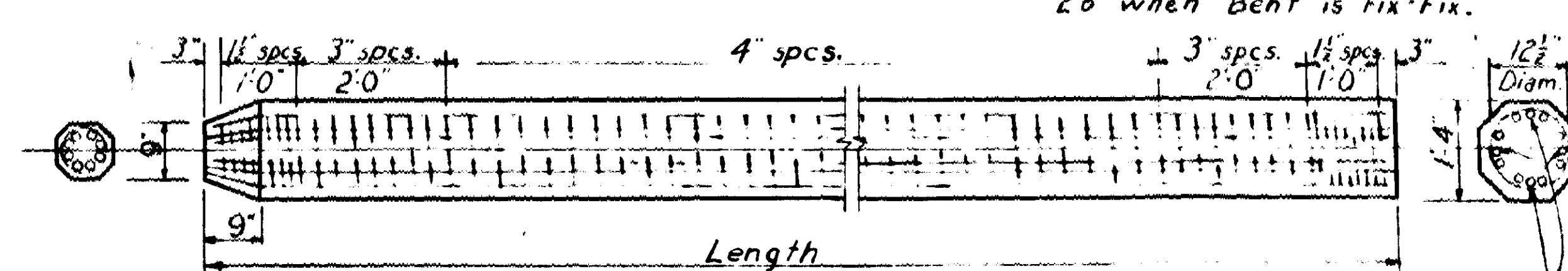
BRIDGE NO. DRAWING No. 5492

FEED ROAD DIST NO.	STATE	PROJECT NO.	FISCAL YEAR	SHEET NO.	TOTAL SHEETS
6	ARK.				
STATE JOB NO.					

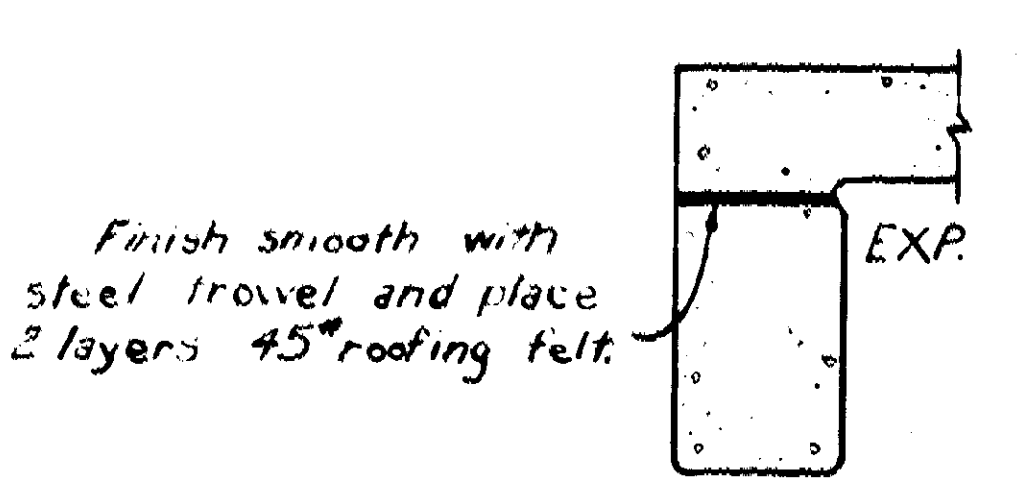
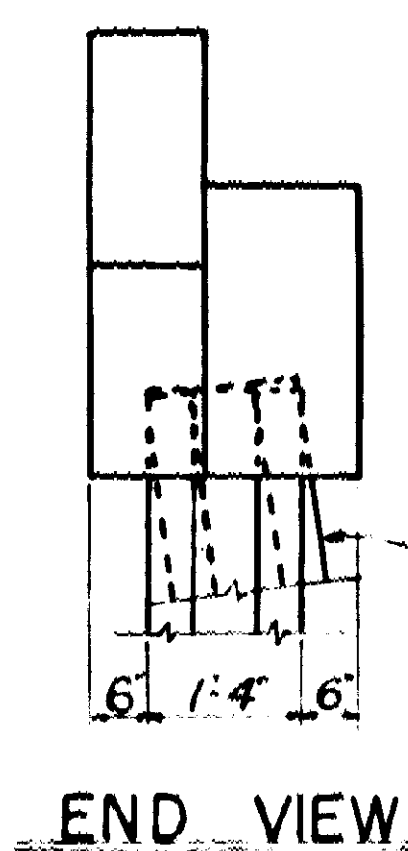
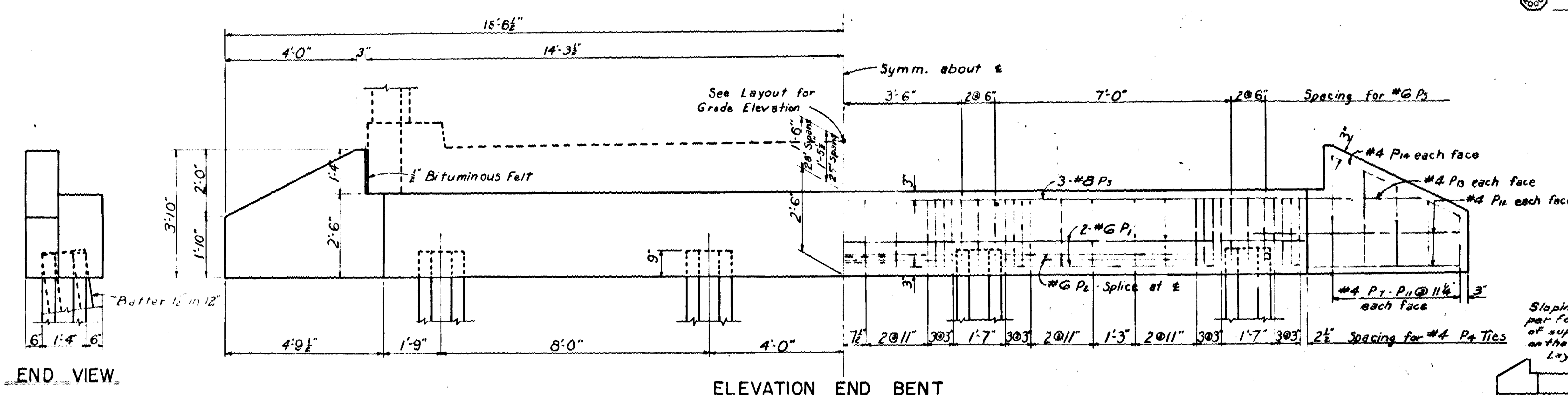


BENT BARS									
NO. IN END BENT	NO. IN INTERM. BENT	MARK	SIZE	LENGTH	A	B	BENDING DIAGRAM		
4	4	P ₁	#6	29'3"	14'0"	1'5"			
4	4	P ₂	#4	8'9"	2'1 1/2"	1'11 1/2"			
12	12	P ₃	#6	6'1"	2'1 1/2"	1'11 1/2"			
Dimensions are to centers of bars									

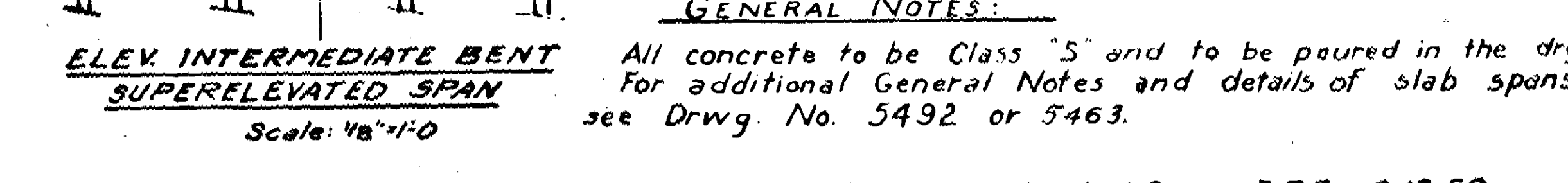
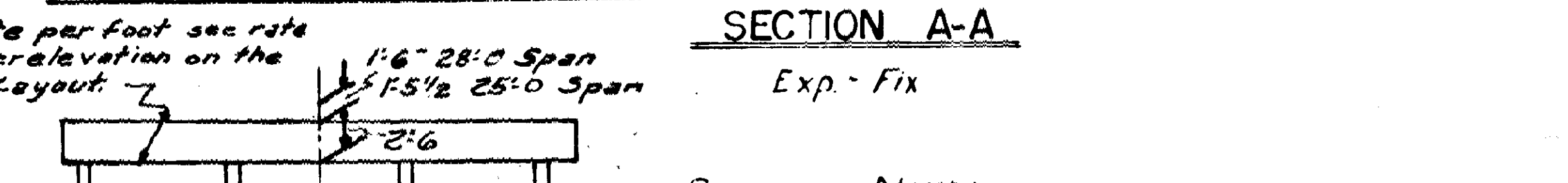
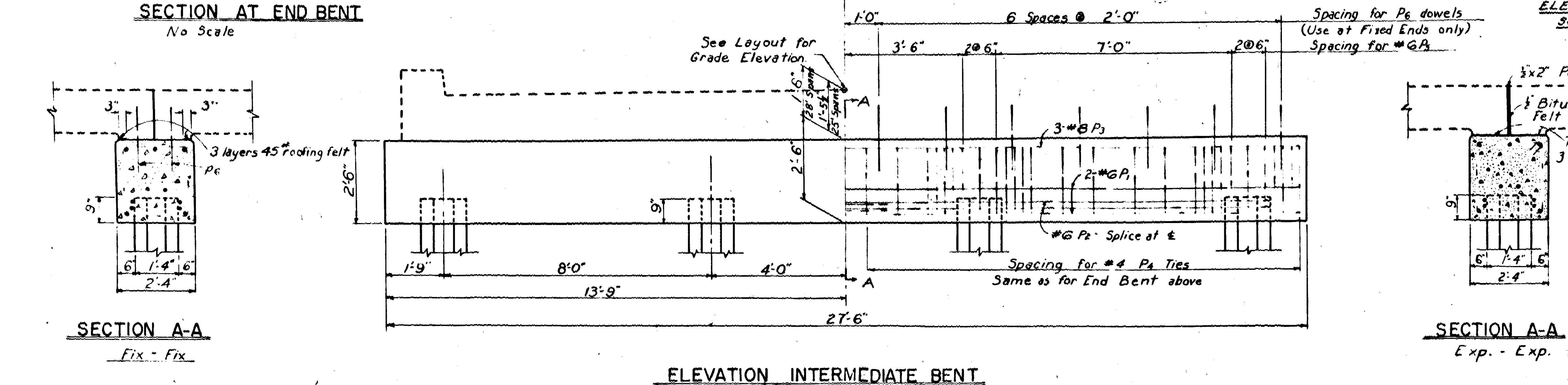
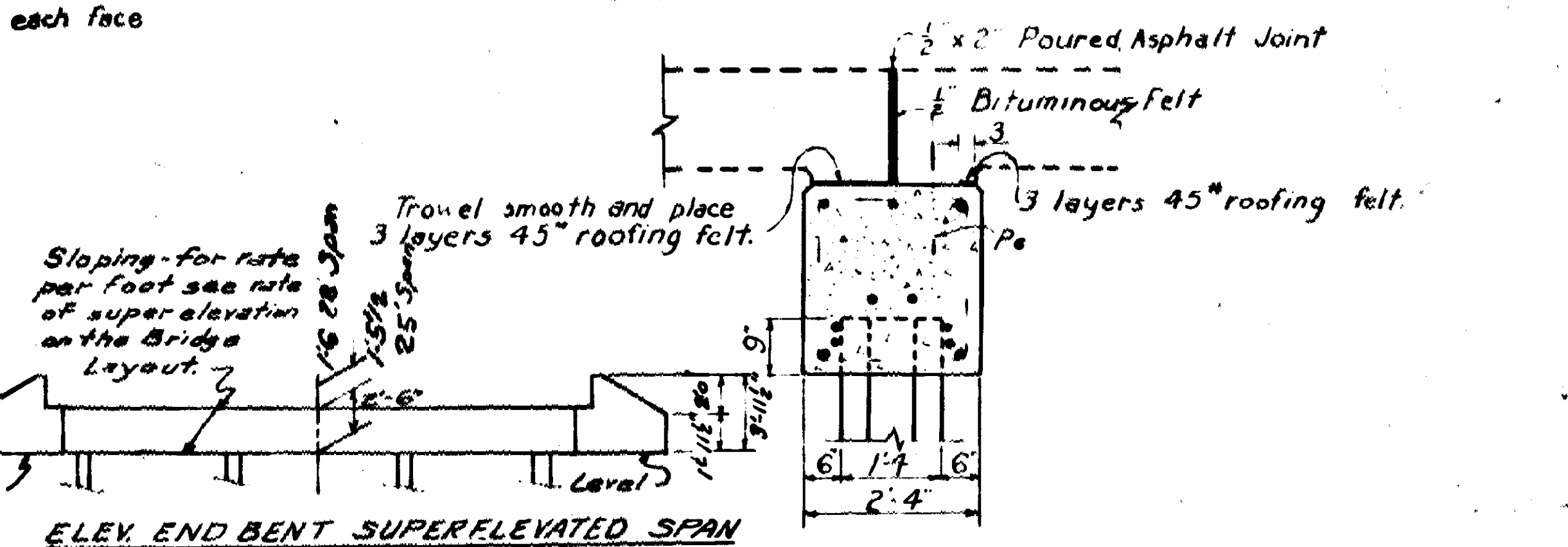
STRAIGHT BARS				
NO. IN END BENT	NO. IN INTERM. BENT	MARK	SIZE	LENGTH
4	4	P ₁	#6	27'2"
3	3	P ₂	#8	27'2"
14	14 str 28	P ₃	#6	2'0"
4		P ₄	#4	1'7"
4		P ₅	#4	2'7"
4		P ₆	#4	2'1"
4		P ₇	#4	3'6"
8		P ₈	#4	7'0"
4		P ₉	#4	5'9"
4		P ₁₀	#4	4'3"



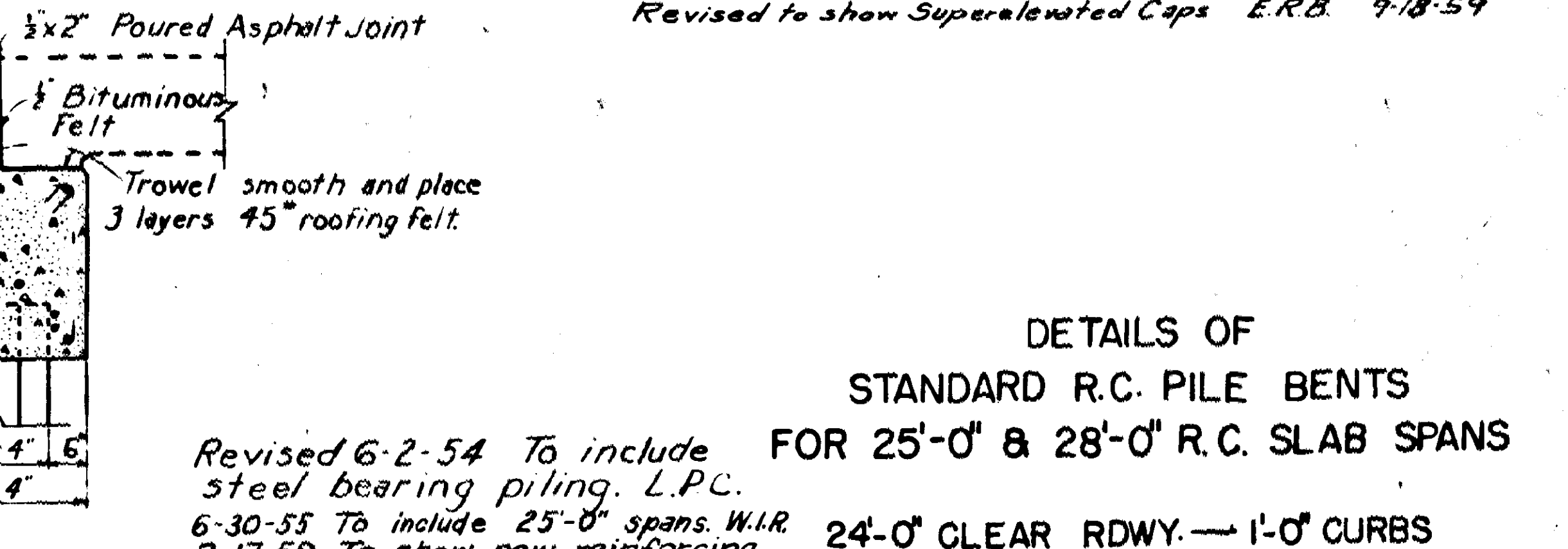
Reinforcing: Vertical Bars { 8-#6 Lengths to 35' } #2 Spiral
 For lengths over 45' add 4-#6 thru middle third of pile.



Drive piles in Intermediate Bents to a minimum bearing of 32 kips per pile.
 Drive piles in End Bents to a minimum bearing of 30 tons per pile.
 Use steel bearing piles when called for on layout.



GENERAL NOTES:
 All concrete to be Class "S" and to be poured in the dry for additional General Notes and details of slab spans see Drwg. No. 5492 or 5463.
 Revised to show Superelevated Caps E.R.B. 7-18-59



DETAILS OF STANDARD R.C. PILE BENTS FOR 25'-0" & 28'-0" R.C. SLAB SPANS
 Revised 6-2-54 To include steel bearing piling, L.P.C.
 6-30-55 To include 25'-0" spans, W.I.R.
 2-17-59 To show new reinforcing bar designations, R.L.C.

ARKANSAS STATE HIGHWAY COMMISSION
 LITTLE ROCK, ARK.
 Drawn By: A.R. Date: 6-2-54
 Traced By: A.E.C. Date: 6-10-55
 Checked By: W.M. Date: 8-10-55
 Scale: 1/2" = 1'-0"
 DRAWING NO. 5492-A